

ControlLab™

Programmable Automation Training

ControlLab™ is a unique training system offering state-of-the-art learning opportunities in controls and automation.

Equipped with a programmable automation controller, large format touchscreen, variable frequency drive, laser distance measuring sensor and solenoid operated louvers; students utilize airflow to control the positioning of an aerodynamic float.

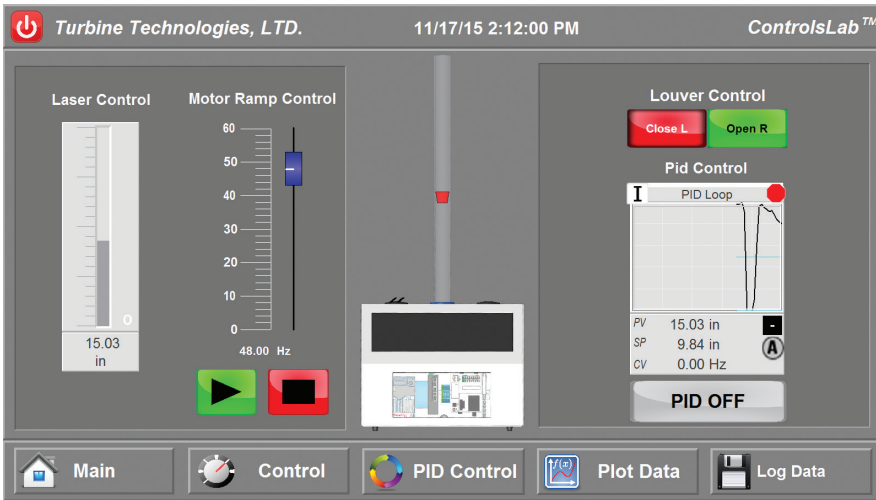
A complete curriculum allows students to gain hands-on knowledge of subjects that include programmable automation controller operation (PLC/PAC), ladder logic programming, feedback loops, PIDE and many other related topics.

ControlLab™ allows students to devise real-world, custom industrial process scenarios. No additional hardware or software is required. This affordable, yet turnkey system consists of the following primary components:

- **Programmable Process Automation Controller (PAC)**
Featuring onboard Rockwell Automation Studio 5000™ ladder logic with PIDE Autotune, alarms, lock-out tag out, etc.
- **Human Machine Interface (HMI)**
Featuring a large format, 20-inch color touch screen with pre-installed Rockwell Automation FactoryTalk View ME® v8.0
- **Variable Frequency Drive (VFD)**
- 3-Phase Air Blower
- Dual Solenoid-Actuated Air Louvers
- Photoelectric Laser Sensor
- Ethernet Connectivity
- Comprehensive Free Curriculum

AIRFLOW CONTROL



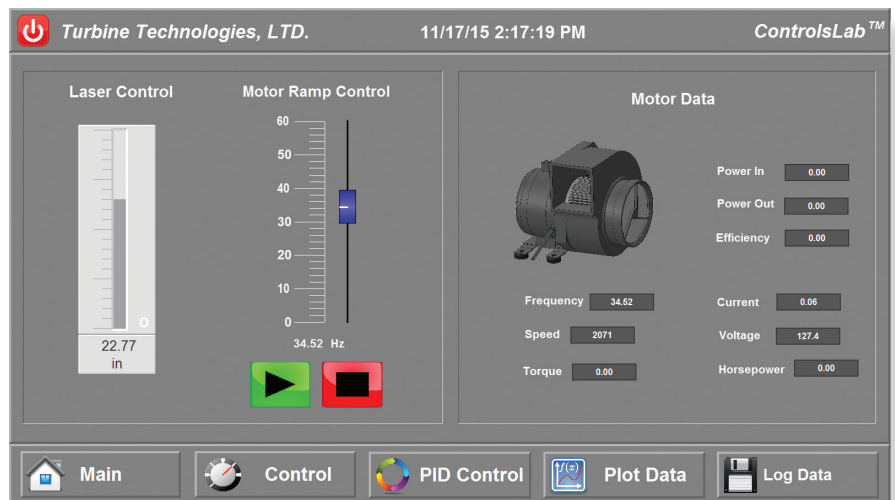


Human Machine Interface (HMI)

Featuring a large format, 20-inch color touch screen with pre-installed Rockwell Automation FactoryTalk View ME® v8.0

Rockwell Automation

Pre-installed virtual instrument screens for out-of-the-box, real-time monitoring of motor performance characteristics along with manual & PIDE motor control. Custom, open-ended design of instrumentation & process automation scenarios made available by on-board Rockwell Factory Talk View ME V 8.0 & Studio 5000.



Specifications:

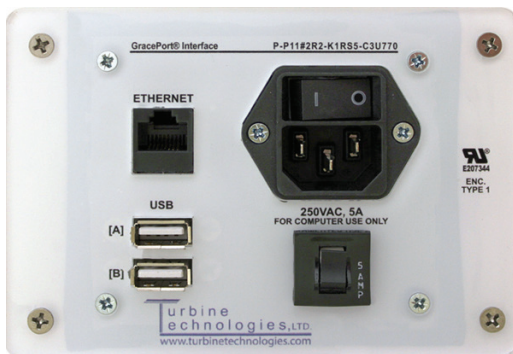
Power: Standard wall outlet - Auto switching 110V or 220V, 50/60Hz

Power Consumption: 3 Amps

Cabinet: Robust 14 gauge steel with a highly durable, powder coat finish


Dimensions: 20" (51cm) L x 17" (43cm) W x 17"H (43cm)

Weight: 48 lbs (22kg) (UPS shippable)



Convenient USB and Ethernet ports supporting LAN & remote access.

Turbine technologies, LTD.

Copyright 2015, Specification subject to change without notice, Made in the U.S.A. 

PH: 715 924 4876 E-Mail: sales@turbinettechnologies.com

www.turbinettechnologies.com